

# HID-Basic Semi-Parallel ballasts for SON/CDM/MH lamps

## BSN 150 L300 I

The HID Basic Semi-Parallel ballast is an impregnated (HID standard) electromagnetic copper/iron ballast for use with an external ignitor for HID lamps.

### Product data

#### • General Characteristics

Application code	L300 I
Rated Ballast-Lamp Power	150
Line Voltage	220 V
Line Frequency	50 Hz

#### • Operating Characteristics

Mains voltage safety (AC)	-10%/+10%
Mains voltage performance (AC)	-8%/+6%
Input current with PF-correct.	0.85 A
Input current w/o PF-correct.	1.8 A
Power losses gear	16.3 W
PowerFactor 100% output power	0.85 (min) -
PowerFactor w/o PF compens.	0.45 -

#### • Wiring Characteristics

Connector type	Screw
----------------	-------

#### • Temperature Characteristics

T-winding maximum (tw)	130 (max) C
Delta-T normal conditions	70 C

#### • Product Dimensions

Length A1	125.0 mm
Fixing Hole Distance	110 mm
Length A2	
Width B1	75.5 mm
Height C1	64.5 mm
Fixing Hole Diameter D1	6.2 mm

#### • Approval & Application Chars

CE marking	Yes
ENEC certificate	No
CCC certificate	No

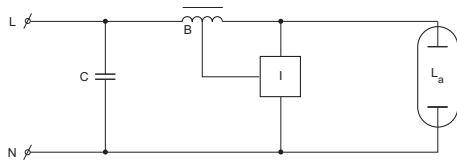
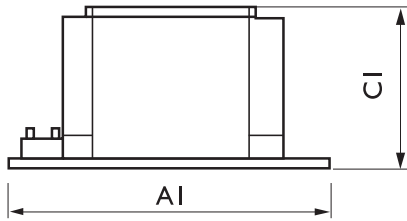
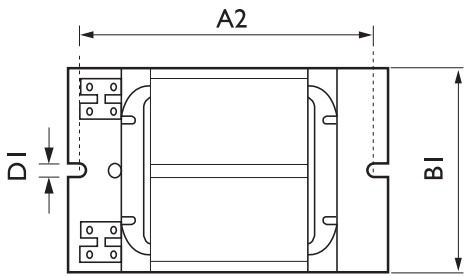
#### • Product Data

Order code	913710100150
Full product code	913710100150
Full product name	BSN 150 L300 I
Order product name	BSN 150 L300 I
Pieces per pack	1
Packing configuration	6
Packs per outerbox	6
Bar code on pack - EAN1	8710163148113
Bar code on outerbox - EAN3	8710163031873
Logistic code(s) - 12NC	913710100150
Net weight per piece	1.850 kg

**PHILIPS**

# HID-Basic Semi-Parallel ballasts for SON/CDM/MH lamps

## Dimensional drawing



### BSN 150 L300 I

Product	A1 (Norm)	A2 (Norm)	C1 (Norm)	D1 (Norm)	W (Norm)
BSN 150 L300 I	125.0	110	64.5	6.2	75.5



© 2015 Koninklijke Philips N.V. (Royal Philips)  
All rights reserved.

Specifications are subject to change without notice. Trademarks are the property of Koninklijke Philips N.V. (Royal Philips) or their respective owners.

[www.philips.com/lighting](http://www.philips.com/lighting)

2015, July 28  
data subject to change